

echoes

OF EMPOWERMENT



Annual Report 2023-24



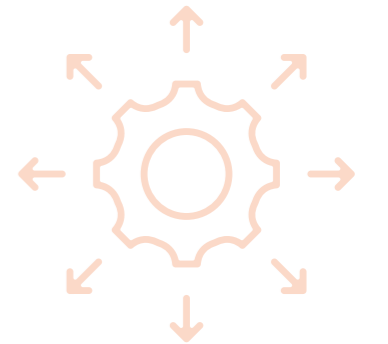
Table of Contents

Sambhav Foundation:	
A Story of Transformative Empowerment	02
The Seed of Possibility	03
A Vision for Empowerment	03
Leadership Reflection	04
The Power of Intersectionality	06
Sambhav Foundation Journey	07
Our Leadership	08
Synergistic Teams and Flexible Frameworks	10
Empowering Echoes: A Year in Review	12
Mapping Sustainability	17
A Journey of Empowerment	18
Echoes Across the Nation: Geographical Reach	19
<hr/>	
Weaving the Tapestry of Change:	
Key Achievements	20
Empowering Women Through Beauty: A Transformative Journey	21
Sambhav’s Experiential Training Initiatives: Pushing Boundaries in Vocational Training	22
Empowering Through Expertise: Sambhav’s Approach to Institutional Capacity Building	26
Outcomes that Matter	30
<hr/>	
Diverse Funding Models and Collaborative	
Partnerships Driving Social Change	34
Sambhav's Journey: Driving Social Change Across India	35
Financial Statement	38
<hr/>	
Conclusion: A Call to Action	40

Sambhav Foundation: A Story of Transformative Empowerment

The Seed of Possibility

In 2006, a vision was born in the heart of India, a vision named Sambhav Foundation. "**Sambhav**" (संभव) in Sanskrit translates to "**Possible**" or "**Possibility**." Rooted in the words "**भव**" (**bhava**), meaning "**being**" or "**becoming**," and "**सम्**" (**sam**), meaning "**together**" or "**complete**," Sambhav conveys the notion of something that can come into being within the realm of possibility. This name embodied the spirit of the foundation, dedicated to transforming the lives of women, youth, and the differently-abled through knowledge, skills, and opportunities, fostering sustainable livelihoods.



A Vision for Empowerment

From its inception, Sambhav Foundation aimed to create sustainable, healthy, and educated communities where every individual has the opportunity to thrive. The foundation's multifaceted programs sought to build ecosystems supporting continuous growth and development, ultimately leading to empowered and resilient communities. **The mission was clear: to empower women, youth, and the differently-abled through a holistic approach integrating education, employment, and entrepreneurship in a healthy environment.**

Leadership

Reflection

“

Together, we can build a robust ecosystem that fosters holistic development, overcome challenges, achieve our goals, and make a meaningful difference in the lives of those we serve. ”

As we reflect on the past year at the Sambhav Foundation, I am filled with immense pride and gratitude for the progress we have made to empower communities through our diverse projects. This year has been a testament to our collective efforts, highlighting both our achievements and challenges.

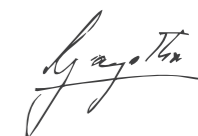
We have seen remarkable success across our education, employment, and healthcare initiatives. Our educational programs have reached over 20,000 children, equipping them with essential skills and knowledge. Through vocational training and entrepreneurship development, we have empowered more than 3,000 individuals, creating sustainable livelihoods and reducing economic absenteeism. In healthcare, we conducted over 20,000 health screenings, providing early detection and intervention for non-communicable diseases.

One of the key learnings this year has been the critical role of collaboration and holistic approaches in driving our initiatives forward. By recognising and addressing the interconnected nature of social issues, we have been able to implement more effective and sustainable solutions. Through partnerships with local organisations, government agencies, and community leaders, we have leveraged diverse perspectives and resources to maximise our impact.

Our projects have exemplified the power of integration in promoting holistic development and community empowerment. Whether it's our initiatives in education, healthcare, or livelihoods, we have seen how addressing multiple facets of community needs leads to more comprehensive and lasting change. By coordinating our efforts and collaborating across sectors, we have been able to create synergies that amplify the positive outcomes for the communities we serve.

Looking ahead, I am excited about the opportunities that lie before us. As we continue to navigate the complexities of our work, let us remain steadfast in our commitment to collaboration, intersectionality, and community-centric approaches. Together, we can build a robust ecosystem that fosters holistic development, overcome challenges, achieve our goals, and make a meaningful difference in the lives of those we serve.

For those who read "Echoes of Empowerment: Sambhav's Annual Report on Intersectional Impact," my hope is that you will gain a comprehensive overview of Sambhav's initiatives and achievements in empowering communities through integrated projects. The report highlights how Sambhav's efforts have created a ripple effect of empowerment across various sectors and demographics. Readers will find insights into how Sambhav's interventions intersect and collaborate to address multifaceted challenges, ultimately leading to a meaningful impact on individuals and communities. You will learn about our innovative approaches in experiential learning, successful partnerships, and the sustainable strategies employed by Sambhav to create lasting empowerment and change.



Dr. Gayathri Vasudevan

Chief Impact Officer

The Power of Intersectionality

Sambhav Foundation's approach stood out for its deep commitment to intersectionality and holistic development. Unlike organisations tackling single-issue challenges, Sambhav understood and addressed the interconnected nature of social challenges. High absenteeism in education and employment among marginalised communities was driven by inadequate infrastructure, teacher shortages, and poverty. UNESCO and ILO reported alarming absenteeism rates in rural areas and among low-income workers due to health issues and poor conditions.

Sambhav's cluster-centric approach was a strategic method that focused on implementing multi-faceted interventions within specific geographical areas. By concentrating resources and efforts, the foundation delivered integrated programs covering education, healthcare, employment, environment, and entrepreneurship, ensuring comprehensive community support.



Sambhav Foundation Journey

2015
—
Present

2010
—
2015

2006
—
2010

Strategic Partnerships and Impactful Collaborations

A pivotal aspect of Sambhav's growth was its ability to forge impactful partnerships. Collaborations with entities like **HDFC, Microsoft, Accenture, Dell, Oracle, H&M Foundation, and Schaeffler** amplified the foundation's impact. These partnerships extended Sambhav's reach and deepened its impact across various sectors.

Scaling Up and Diversifying

As Sambhav's influence grew, it expanded into new regions and broadened its programmatic focus. Significant milestones included the launch of the **"Educode Program"** in education and expansion into areas like Odisha. This period marked Sambhav's transformation from a nascent entity into a significant force in community development.

Laying the Groundwork

The initial years were dedicated to building a robust foundation in **education, healthcare, and vocational training**. Despite limited resources and the complexities of India's social sector, the foundation remained steadfast in its mission. During these formative years, Sambhav strategically established touchpoints in diverse communities, setting the stage for future interventions.

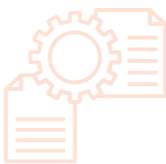
Our
Leadership



Balaji Sarma
Operations



Rajeswari Dhar
Program & Impact



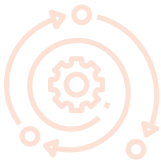
Biju Kumar
Projects



Alok Piri
Audit



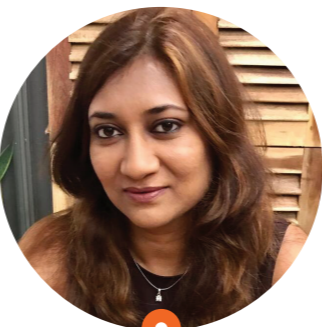
Dr. Gayathri Vasudevan
Chief Impact Officer



Ashim Tuli
Compliance



Nilanjana Mukherjee
Program & Impact



Rajkumar K
Finance



Gayathri Shanker
People & Culture



Synergistic Teams and Flexible Frameworks



Sambhav Foundation’s organisational structure was designed to foster intersectional collaboration, ensuring maximum impact for marginalised communities. This collaborative approach broke down traditional silos between departments, leading to more holistic and impactful service delivery.

Verticals Expertise and Depth

- Skill Training and Entrepreneurship**
Vocational training programs equipped individuals with marketable skills, promoting sustainable livelihoods, entrepreneurship, and economic independence.
- Quality Education**
Programs enhanced access to quality education and teacher training in underserved regions, impacting over 1,00,000 participants.
- Accessible Healthcare**
Healthcare initiatives ensured comprehensive health support in marginalised communities, benefiting over 4,00,000 individuals.
- Infrastructure Development**
Focused on creating essential infrastructure like schools, training centres, sanitation facilities, and clean water access points.
- Circular Economy and Environment**
Focused on sustainable agriculture, waste management, upcycling, and eco-friendly product development. We promoted resource efficiency, community-based environmental education, and carbon offsetting. Our Green Skilling initiatives train individuals in renewable energy, organic farming, and sustainable practices, fostering environmental sustainability and economic growth.
- Technology and Future Tech**
Our forward-looking programs included training in AI, IoT, and data analytics, equipping participants with cutting-edge skills to thrive in the digital economy and drive innovation in their communities.

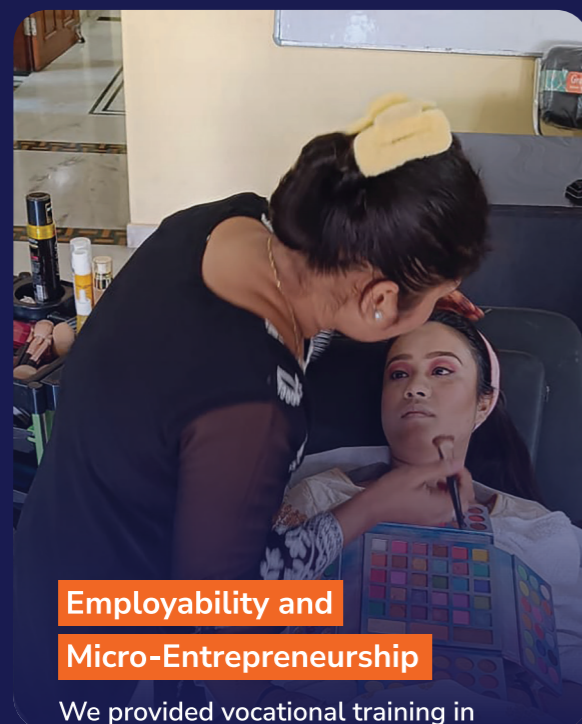
Horizontals Collaboration and Integration

- Resource Sharing**
Optimised skills by sharing expertise and manpower, across projects, ensuring efficient use of resources.
- Knowledge Management**
Centralised monitoring and cross-training fostered continuous learning and a holistic approach.
- Community Engagement**
Inclusive participation ensured sustainable and community-driven interventions.
- Technology Integration**
Unified data systems and in-house CRM facilitated real-time collaboration.
- Capacity Building**
Upskilling and cross-skilling workshops empowered employees and community members.
- Diversity, Equity, and Inclusion (DEI)**
Addressed systemic barriers and created an environment where everyone could contribute.
- Gender Integration**
Designed interventions addressing the needs of both men and women, aiming for gender-responsive planning.
- Advocacy and Policy Influence**
Unified advocacy efforts strengthened policy changes for marginalised communities.

Empowering Echoes

A Year in Review

In 2023, Sambhav Foundation's approach drove sustainable change and empowerment. Through its intersectional cluster-centric approach, the foundation tackled absenteeism and fostered community progress. By concentrating resources and efforts, Sambhav delivered integrated programs that covered education, healthcare, employment, environment, and entrepreneurship, ensuring comprehensive community support.



Employability and Micro-Entrepreneurship

We provided vocational training in multiple trades through a well-designed curriculum coupled with placement assistance and entrepreneurial exposure to youth, women, and intellectually disabled.



Health For Self and Family

Health is the bedrock of development, and at Sambhav Foundation, we addressed it holistically. Our approach integrated sanitation, hygiene, and healthcare into a cohesive strategy that promoted dignity and well-being. We have provided health screenings & WASH projects to ensure that good health & hygiene are accessible to all.



Quality Education and Training

Education is the key that unlocks doors to opportunity. At Sambhav Foundation, we are dedicated to making this key available to every child, especially those who are most marginalised. Our focus has been on pioneering safe learning environments and holistic education models.



Community and Environment

In an age where environmental preservation is a priority, we saw an opportunity to lead a green revolution. Our energy conservation initiatives are not just about reducing carbon footprints - they are about planting the seeds for a sustainable future. Our solar panel installation projects and beach cleaning initiatives are just examples of this aspect.



Provided
Enterprise Building
Support to
8,500+
Individuals

Enabled
20,000+
NCD Screenings
Across the Country

Enrolled
34,622+
in Our Skilling Courses

Oral Health Awareness
Campaigns Reached
40,000+
Students

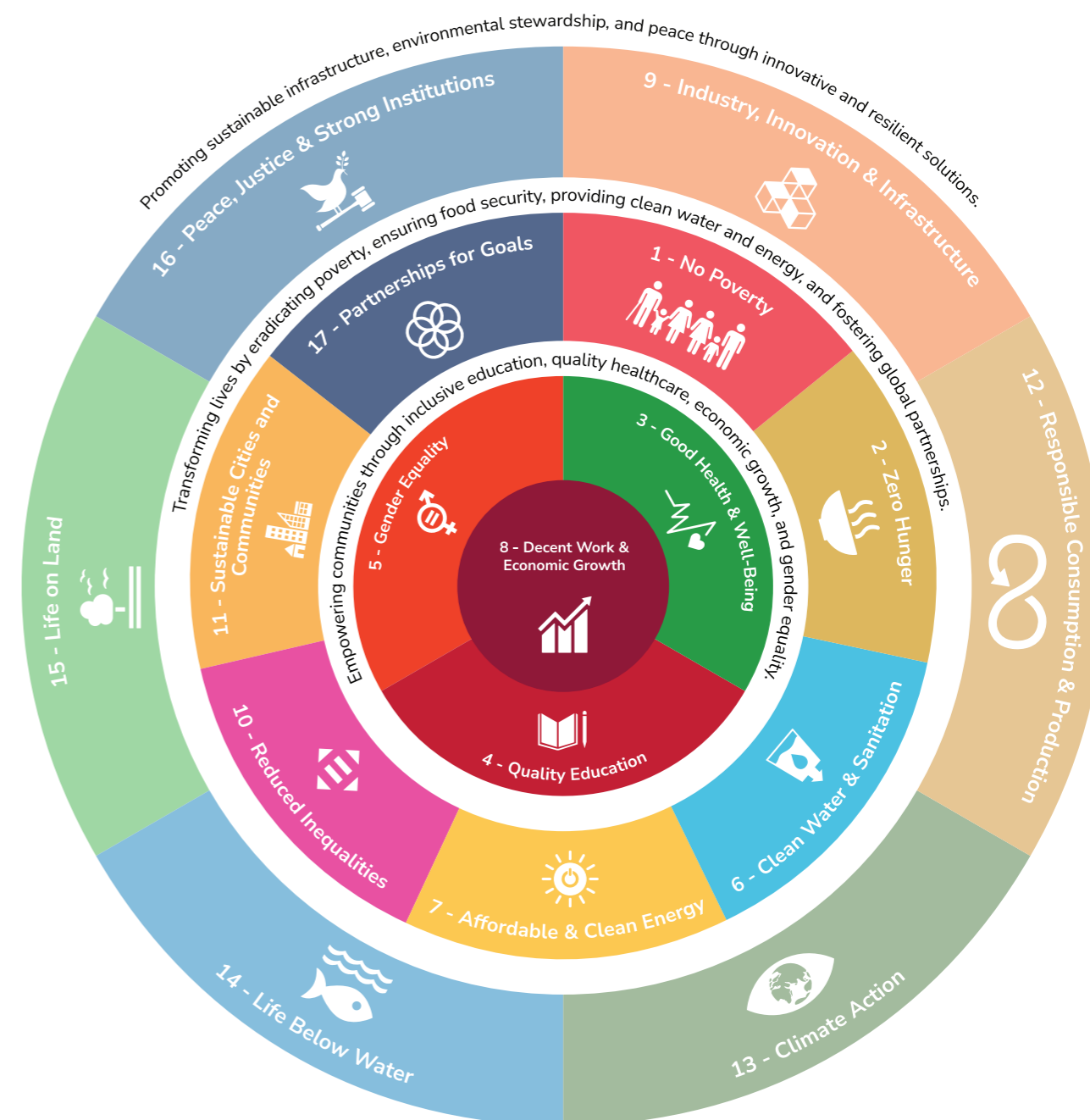
Impacted more than
20,000
Students

Built
250+
Washrooms in 42
Government Schools

13
Solar Panels were Installed
in 13 Public Health Centres
across Karnataka

Environmental restoration
efforts revitalised
2 Lakes
in Bengaluru and Kolkata

Mapping Sustainability



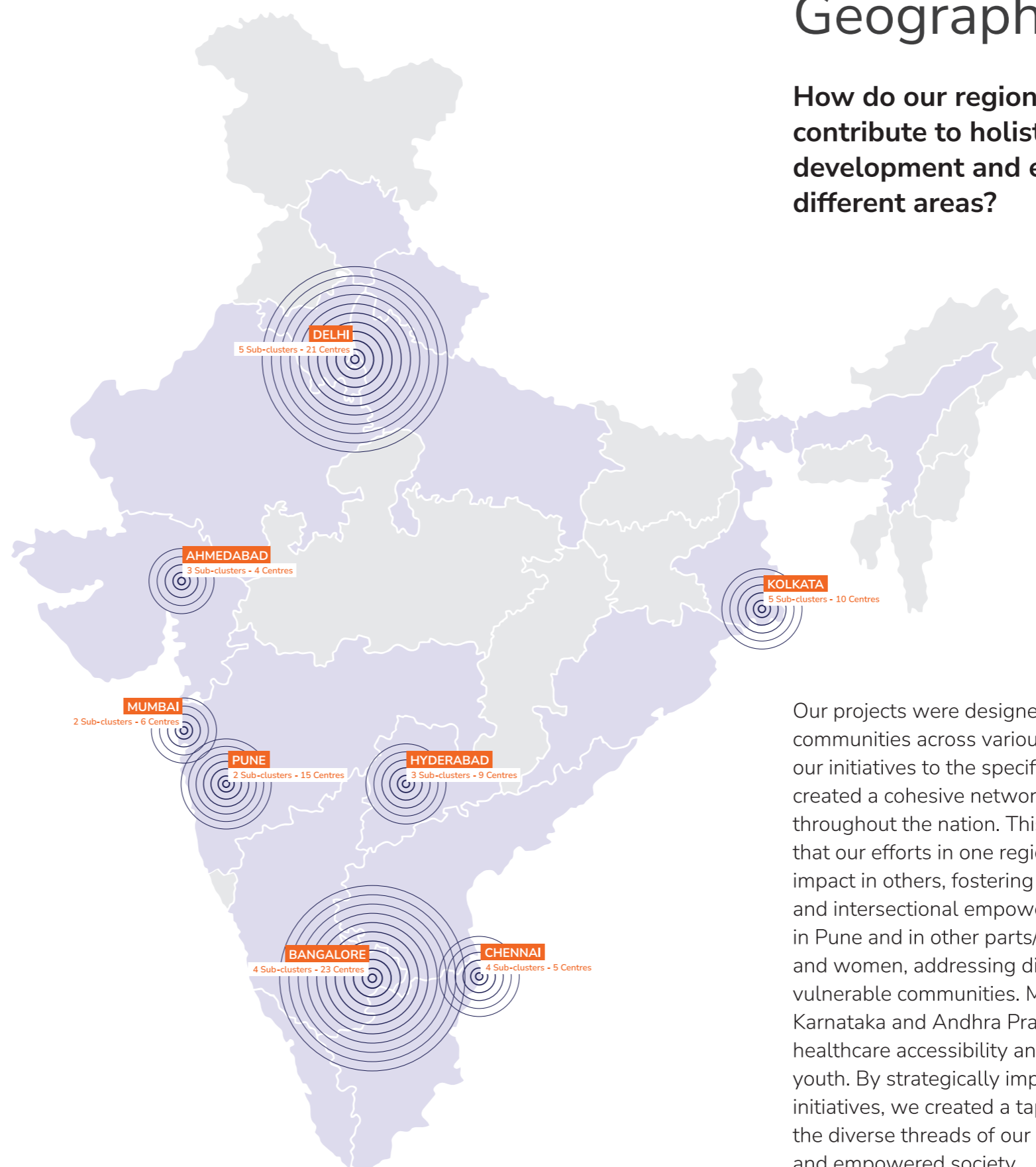
A Journey of Empowerment

Since its inception, Sambhav Foundation has empowered communities across India. From the initial years of building a robust foundation in education, healthcare, and vocational training to scaling up and diversifying its reach and impact, Sambhav has remained committed to its vision of creating sustainable, healthy, and educated communities. Through strategic partnerships and impactful collaborations, the foundation continues to transform lives, demonstrating the transformative power of empowerment.

Echoes Across the Nation:

Geographical Reach

How do our region-specific initiatives contribute to holistic community development and empowerment across different areas?



Our projects were designed to address the unique needs of communities across various regions of the country. By tailoring our initiatives to the specific challenges of each area, we created a cohesive network of empowerment that resonated throughout the nation. This interconnected approach ensured that our efforts in one region complemented and enhanced the impact in others, fostering holistic community development and intersectional empowerment. For example, our initiatives in Pune and in other parts/districts of Karnataka target youth and women, addressing digital skill gaps and uplifting vulnerable communities. Meanwhile, in other parts/districts of Karnataka and Andhra Pradesh, we focus on enhancing healthcare accessibility and providing vocational training for youth. By strategically implementing these region-specific initiatives, we created a tapestry of change that wove together the diverse threads of our nation, fostering a more inclusive and empowered society.

Weaving the Tapestry of Change: Key Achievements

Empowering Women Through Beauty:

A Transformative Journey

At the heart of our mission lay the Beauty Experiential Learning Program, a beacon of empowerment meticulously crafted to redefine women's agency and independence. This initiative was not just about imparting beauty therapy skills but about instilling entrepreneurship and self-reliance in its participants.

The journey began with a modest investment in beauty kits, a deliberate step to foster ownership and commitment from the outset. This tangible contribution set the stage for a transformative experience where participants learned to balance skill development with real-world applications. The innovative "earn while you learn" model allowed them to apply their newfound skills by providing discounted beauty services to actual clients. This hands-on approach not only honed their expertise but also provided economic empowerment, as they generated income during their training.

Financial independence was at the program's core. Participants covered their training costs through the services they provided, liberating themselves from financial constraints and enhancing their decision-making power. This autonomy was a driving force, enabling them to contribute meaningfully to their households and fostering a profound sense of empowerment.

The program also emphasised community and network building, creating a supportive environment that extended beyond the training period. This collective empowerment was reinforced through shared experiences and collaborative opportunities, adding a valuable layer to their sense of independence.



Beyond technical skills, participants gained essential entrepreneurial knowledge in financial management and marketing, positioning them not just as employees but as potential business owners. The program's impact was far-reaching, transforming self-perception and boosting confidence, equipping women to chart their course in the beauty industry and beyond.

In essence, the Beauty Experiential Learning Program was a paradigm shift in vocational training, blending skill development with financial and community empowerment. It created a robust foundation for women to embrace their agency and achieve lasting independence.

Sambhav's Experiential Training Initiatives:

Pushing Boundaries in Vocational Training

Sambhav Foundation pushed the boundaries of vocational training with innovative approaches that prioritised hands-on and experiential learning. This commitment to real-world experience was evident across various segments, particularly in the automotive, digital business solutions (DIBS), beauty, tailoring, and retail sales verticals, where training programs were designed to meet industry demands and foster practical skills among participants.

Through these experiential learning initiatives, the Sambhav Foundation empowered individuals with the skills, confidence, and experience needed to thrive in their chosen fields, ensuring they were well-prepared to meet the challenges of the real world.

EV & Green Skilling

In the **Auto Segment**, our training programs were primarily hands-on, focusing on troubleshooting vehicle malfunctions. Candidates worked on various vehicle models, mastering the assembly and troubleshooting processes. To enhance this experience, we introduced a **Two-Wheeler Simulator** in our labs. By procuring major components and having candidates assemble the simulator in-house, we created a cost-effective, customised test rig that aligned with our training needs. This approach reinforced their technical skills and also instilled a deep understanding of vehicle mechanics.



Live Garages



Complementing this was our **Live Garage Initiative**, a real-world learning environment where trainees gained hands-on experience. Initially, we organised a free e-bike health camp to gauge public interest and service needs. Based on the feedback, we established a nominal-cost service garage, providing trainees with invaluable experience in customer service and technical troubleshooting in a real-world setting.

Sales Mastery Labs



In the **Retail Sales Segment**, our training program integrated experiential learning with practical sales experience. The **Retail Sales Experiential Learning Program** was designed to prepare individuals for the dynamic retail sector by providing them with opportunities to engage directly with customers. Participants sold products created by Sambhav candidates in other programs, such as tailoring items and beauty services, in real-world settings. This hands-on experience allowed them to practise essential sales techniques, including visual merchandising, customer relationship management, and personal grooming. By coordinating with other programs and managing the sales process from start to finish, participants gained a comprehensive understanding of the retail industry, ensuring they were well-prepared for successful careers in this field.

Beauty Kiosks

In the **Beauty Segment**, our training program was designed to empower women with both technical and entrepreneurial skills. The **Beauty Experiential Learning Program** enabled participants to master essential beauty therapy techniques while fostering a sense of ownership and financial independence. A key component of this program was the "earn while you learn" model, where participants invested in their own beauty kits, which they used during training. To further enhance their real-world experience, participants set up beauty kiosks and offered home services, allowing them to apply their skills in a real-world setting. This hands-on approach reinforced their technical expertise and also built their confidence, preparing them for successful careers in the beauty industry.



Production Unit

In the **Tailoring Segment**, our approach focused on practical, hands-on training in textile production. The **Tailoring Experiential Learning Program** equipped participants with the skills needed to produce high-demand items such as aprons, bags, shirts, pants, and coats. By engaging in real-time production orders within a fully functional production unit, participants gained invaluable experience in stitching, production techniques, and entrepreneurship. This real-world exposure ensured that trainees mastered the technical aspects of textile production and also developed the business acumen needed to run a successful tailoring operation, providing a sustainable source of income.



Analytics Nexus



In the **Digital Business Solutions (DIBS) Vertical**, while project-based learning had been the norm, we began incorporating more experiential learning elements, particularly in the H&M Project. Here, candidates worked with real-time data, either sourced internally from Sambhav or externally from platforms like Kaggle, Maven Analytics, and Dataquest. This approach allowed participants to engage with real-world datasets, working within defined timelines and towards specific outcomes, closely simulating industry conditions. This exposure enhanced their technical skills and also prepared them for the data-driven demands of the modern business world.

Empowering Through Expertise:

Sambhav's Approach to Institutional Capacity Building

At Sambhav Foundation, our commitment to building institutional capacity is a cornerstone of our mission to create sustainable, impactful change. By integrating the specialised knowledge of Instructional Designers with the dynamic effectiveness of our Training of Trainers (ToT) program, we deliver educational and skill development initiatives that are not only industry-aligned but also deeply experiential. This dual approach ensures that our programs remain relevant, practical, and adaptable to the evolving needs of our beneficiaries.



**Instructional Designers:
Crafting Industry-Aligned Learning**

Designing for Impact

Our Instructional Designers play a critical role in shaping the future of vocational training by creating learning materials that align with National Skill Development Corporation (NSDC) standards. These modules are meticulously developed to combine foundational knowledge with specialised skills, ensuring that learners are equipped with the tools they need to thrive in the workforce. By emphasising real-world applicability, we make certain that our programs remain responsive to market demands, thereby enhancing the employability of our participants, especially those from marginalised communities.

Learning by Doing

At the heart of our instructional strategy is a focus on experiential learning. We believe that true understanding comes from doing, which is why our courses, such as those in the beauty segment, incorporate models like "earn while you learn." This approach allows participants to apply their skills in real-time, offering home-based services while continuing to hone their expertise in critical areas such as client engagement, business management, and financial acumen.

Innovative Pedagogy for Inclusive Growth

Our instructional materials are designed to be inclusive and holistic, catering to diverse learning styles and backgrounds. This ensures that every participant, regardless of their starting point, has the opportunity to grow and succeed. For instance, our financial literacy programs are tailored to empower women, enabling them to manage and invest their earnings wisely, thereby fostering long-term financial independence.



Training of Trainers (ToT): Elevating Education Delivery

Empowering Educators

The ToT program at Sambhav is more than just a training initiative; it's a movement to elevate the quality of education across our programs. By equipping Master Trainers with the skills and knowledge they need to deliver content effectively, we create a ripple effect that enhances the learning experiences of countless others. This cascading model ensures that our teaching methods remain consistent, practical, and impactful.

Developing Engaging Content

To address the specific challenges faced by educators, we develop ToT content that is both engaging and practical. Utilising multimedia elements and real-life case scenarios, we provide trainers with the insights they need to address real-world challenges, making their teaching both relevant and effective.

Leveraging Technology for Learning

SAHI, our online learning platform, embodies the flexibility and accessibility that are vital in today's educational landscape. Designed for ease of use, SAHI allows trainers to access content at their own pace, even offline, ensuring that learning never stops. This platform is a key tool in our strategy to scale our training efforts and reach a wider audience.

Training Operations: Refining the Learning Journey

Customising Learning Paths

We understand that every learner is unique, which is why we map candidate profiles to specific job roles, ensuring that each participant's journey is tailored to their strengths and aspirations. This approach not only enhances the learning experience but also maximises the likelihood of successful job placements. For example, candidates with strong communication skills might be aligned with CRM voice roles, while those with a knack for numbers could be guided toward positions like Junior Account Executive or Inside Sales.



Continuous Improvement through Feedback

Our commitment to excellence is reflected in our rigorous observation and feedback processes. Regular teaching observations and formative assessments provide us with the insights needed to continuously refine our programs, ensuring that they remain effective and aligned with the needs of both learners and industry.

Upskilling for Success

To maintain the highest standards of instruction, we invest in the continuous professional development of our trainers. By identifying specific areas for improvement and providing targeted upskilling opportunities, we ensure that our trainers are always equipped with the latest knowledge and best practices, keeping pace with industry developments.

Conclusion: Strengthening Foundations for Sustainable Impact

Sambhav Foundation's approach to institutional capacity building is about more than just education; it's about creating a lasting impact. By empowering our trainers and ensuring that our learning materials are both practical and inclusive, we lay the groundwork for sustainable, positive change. This commitment to quality and relevance is what sets us apart and enables us to empower individuals, communities, and ultimately, the nation.



From Vulnerability to Victory

Bajaj Finserv and Sambhav Foundation launched a skill development program in Pune targeting vulnerable youth and women. The initiative focused on training in high-demand sectors like Retail Sales, Data Entry, and CRM Domestic Voice, addressing digital skill gaps and significantly improving job placement opportunities for participants.

Outcomes That Matter



Alternate Livelihood Pathways

Collaborating with H&M Foundation and Saamuhika Shakti, we uplifted Bangalore's waste picker community by establishing Livelihood and Resource Centres. This project provided vocational training, financial inclusion, and entrepreneurship support, leading to increased income opportunities. The project also offered critical COVID-19 relief, enhancing community resilience and well-being while empowering women within the community.



Harnessing for Healthcare

This project focused on enhancing healthcare accessibility and sustainability in Karnataka. By making **four Taluka hospitals and nine Community Health Centres (CHCs)** in Vijayapur District self-sufficient and eco-friendly, we reduced monthly electricity bills and contributed to minimising India's carbon footprint. This initiative impacted over 4,990 direct beneficiaries, including patients and healthcare staff, and indirectly benefited around 1.2 million people.



Revving Up Careers in Auto

In partnership with KIA Motors, we launched a training program for Automotive Service Technicians (AST) in Anantapur, Andhra Pradesh. Conducted in 4 batches over 432 hours, this program successfully placed 84 out of 104 participants in reputable companies, with salaries ranging between ₹12,500 and ₹27,000 per month.



Trailblazing Women in Trades

We launched the Employment Linked Training Program across six states, providing women with **industry-grade training in traditionally male-dominated roles** like Fitter Fabrication, offering apprenticeships and job placements. Simultaneously, we empowered women from vulnerable communities in Delhi, Mumbai, and Kolkata through skill enhancement in beauty and wellness, with 200 hours of customer-centric training, digital literacy, and entrepreneurial support to foster sustainable income and high-quality service delivery.



ORACLE

Better Hygiene, Better Future

We improved hygiene standards and learning outcomes in government schools across Bengaluru, Yadgir, Raichur, and Gulbarga. By **constructing gender-specific toilets and conducting health and hygiene awareness programs**, we significantly enhanced sanitation, reduced absenteeism, especially among female students, and promoted better hygiene practices.



LOWE'S

Nurturing Future Coders

In collaboration with Lowe's, we launched a **12-month 'Coding Class' program for Classes 6 to 8 in government-run schools across Bangalore and Mangalore**. This initiative **enhanced digital literacy, preparing students for the future by integrating coding into the school curriculum and ensuring they developed both technical and transversal skills**.



**standard
chartered**

Future-Proofing Workforce with Data Driven Mastery

In collaboration with SCB, we successfully implemented a youth-focused skill development initiative across seven major Indian cities. The program exceeded enrolment by over 200 students and surpassed certification targets. With an 80% placement rate among certified candidates, the initiative effectively connected skilled youth to meaningful employment in four key roles - CRM, Cybersecurity, Tally and Data Analytics - showcasing the success of our training methodologies and the program's strong appeal.



AkzoNobel

Palette of Progress

Launched in 2023, this painting skill training program in five cities - Delhi, Kolkata, Thane, Mohali, and Bengaluru - addressed the challenge of limited employment opportunities for youth and existing painters. The program provided foundational and advanced training, significantly improving career prospects and financial independence for participants.



DBS
Live more, Bank less

Crafting Careers, Building Futures

In Tamil Nadu's Gummidipoondi and Hosur regions, this skill development program addressed the shortage of skilled labour in electrical and plumbing work. By **providing up-to-date training, financial literacy, health insurance, and employment schemes**, the initiative successfully bridged the skills gap, leading to job placements and fostering sustainable growth in the region.

Sambhav's Journey:

Driving Social Change Across India

Across India, in bustling cities and quiet villages alike, Sambhav Foundation is leading a movement of transformation. This is a story not just of one place, but of many—woven together by partnerships, diverse funding models, and a shared commitment to creating lasting change.

A man in a white shirt is working on a mechanical device, possibly a motor or a pump, in a workshop. He is using a tool to adjust a component. In the background, there is a circuit board with various components and a BLDG MOTOR. The image is overlaid with a green tint and white contour lines.

**Diverse Funding
Models & Collaborative
Partnerships Driving
Social Change**

A Singular Vision with Singular Partners

In many corners of India, from bustling metros to rural communities, Sambhav's projects sparked new beginnings. Take, for instance, the story of Rekha, a young woman from a small town in Karnataka. Her dream of financial independence once seemed distant until she joined Sambhav's women's empowerment program. Funded by Kantar India Foundation, this program offered comprehensive training in beauty and wellness, equipping women with the skills and confidence to pursue their own entrepreneurial ventures.



This program was far more than just a training course. It was a collaborative effort where CSR donors like Kantar went beyond providing funding—they helped develop industry-relevant content and designed comprehensive training modules that prepared participants for real-world challenges. With the support of on-ground partners like local Krishi Vigyan Kendras and research institutions, the program reached deep into communities, addressing unique local needs and creating sustainable livelihoods for countless women across the country.

Uniting Many Voices Under One Cause

In another part of the country, the Saamuhika Shakti project, driven by the H&M Foundation, brought together a coalition of NGOs working with waste picker communities. This initiative spanned several states, providing alternative livelihoods and financial inclusion to thousands of waste pickers.

For many, like Raju, a waste picker who now had new skills and access to formal banking services for the first time, the impact was profound. The project, which included partners like Social Alpha and Hasirudala, was not just about offering training—it was about empowering entire communities to break the cycle of poverty and marginalisation.

Strength in Numbers

Collaboration often amplifies impact, as seen in Sambhav's partnership with Microsoft and Accenture. Together, these organisations provided training in AI, employability, communication, and entrepreneurship to candidates in tier 2 and tier 3 cities across India. For young people like Aarti, this training was a gateway to new opportunities in the fast-evolving job market, opening doors that were previously out of reach.



Complex Challenges, Collective Solutions

Complex Challenges, Collective Solutions: India's diverse landscapes presented unique challenges, from healthcare access in remote villages to sustainable agriculture in rural areas. In Vijayapura and other regions, where local hospitals struggled with inconsistent power, Sambhav's partnerships with donors like Epsilon and Signify led to the installation of solar panels in Primary Health Centers. This transformed healthcare delivery, ensuring that even the most remote communities had access to essential services.

Meanwhile, a project with the SBI Foundation and CIPLA addressed healthcare needs in multiple villages by deploying Mobile Medical Units that brought doctors and medical supplies directly to those in need. This initiative, along with the establishment of Palliative Care Centers in underserved areas, addressed critical gaps in healthcare accessibility, offering a lifeline to those who previously had none.



The Future of Collaboration

These stories were just a glimpse into Sambhav's nationwide approach to driving social change. From the hills of the Northeast to the bustling streets of Delhi and Noida, and from the tech hubs of Bangalore to the farming communities of Maharashtra, Sambhav's projects made a difference across India. By tapping into diverse funding models and forging collaborative partnerships, Sambhav ensured that each initiative was tailored to the specific needs of the communities it served—in Orissa, Tamil Nadu, Andhra Pradesh, or other parts of the country.

Whether it was a single donor focused on a specific cause or multiple stakeholders uniting under a common goal, every partnership was a step toward a brighter, more inclusive future. For the countless communities across India that Sambhav touched, this was more than just support—it was a future filled with possibility, empowerment, and hope.



Financial
Statement

SAMBHAV FOUNDATION BALANCE SHEET AS AT MARCH 31, 2024			
PARTICULARS	Notes	31-Mar-2024 Rs.	31-Mar-2023 Rs.
RESERVES AND LIABILITIES			
Corpus Fund	2.	7,87,395	7,87,395
Reserves and Surplus	3.	10,03,47,028	9,98,22,034
		10,11,34,423	10,06,09,429
NON-CURRENT LIABILITIES			
Long-Term Borrowings			
Long Term Provision			
CURRENT LIABILITIES			
Trade Payables	4.	-	-
Other Current Liabilities	5.	1,96,50,000	-
Short-Term Provisions	6.	-	-
		1,96,50,000	-
		12,07,84,423	10,06,09,429
ASSETS			
NON-CURRENT ASSETS			
Fixed Assets			
Tangible Assets		2,11,22,645	2,46,41,351
Intangible Assets			
Capital Work-In-Progress			
		2,11,22,645	2,46,41,351
Non-Current Investments			
Long-Term Loans and Advances			
Other Non-Current Assets	7.	1,58,02,681	1,11,50,790
		1,58,02,681	1,11,50,790
CURRENT ASSETS			
Current Investments			
Cash and Cash Equivalents	8.	3,37,30,072	2,57,97,349
Cash in Fixed Deposit		-	-
Short-Term Loans and Advances	9.	5,01,29,025	3,90,19,938
Other Current Assets			
		8,38,59,097	6,48,17,288
		12,07,84,423	10,06,09,429

SAMBHAV FOUNDATION STATEMENT OF INCOME & EXPENDITURE FOR THE YEAR ENDED MARCH 31, 2024			
PARTICULARS	Notes	31-Mar-2024 Rs.	31-Mar-2023 Rs.
Income			
Contribution received towards Charitable Activities		70,40,72,837	52,48,76,860
Other donations		17,77,462	8,38,869
Other Income	10.	1,41,58,660	58,80,733
		72,00,08,958	53,15,96,463
Expenditure			
Employee benefits expense	11.	10,69,64,740	8,48,90,398
Other expenses towards charitable activities	12.	60,90,00,517	43,22,04,091
Depreciation		35,18,706	41,20,508
		71,94,83,964	52,12,14,997
Excess of Income Over Expenditure / [Excess of Expenditure Over Income] [Before Tax]		5,24,994	1,03,81,465
Less: Provision for Income Tax			
Excess of Income Over Expenditure / [Excess of Expenditure Over Income] [After Tax]		5,24,994	1,03,81,465

Conclusion:

A Call to Action

How does Sambhav Foundation's approach create lasting positive impact across communities?

Throughout this report, we have showcased the significant achievements and milestones that underscore Sambhav Foundation's unwavering commitment to intersectional empowerment and holistic development. Our strategic approach addresses diverse community needs, fostering sustainable growth and creating lasting positive impacts across regions.

Our initiatives empower marginalised communities, enhance access to essential services, and promote sustainability through a focus on sustainable practices and environmental stewardship. We invite you to join us in this mission to empower communities and foster sustainable development. Your support and participation are crucial in amplifying our impact and reaching more individuals and communities in need. Together, we can create echoes of empowerment that resonate throughout the nation, driving positive change and building a brighter, more inclusive future for all.

Get involved

We encourage you to participate in our initiatives, whether through partnerships, volunteering, or donations. Your involvement is vital in helping us continue our work and make a difference in the lives of those who need it most. Together, we can weave a tapestry of change that supports and uplifts every corner of our nation.



Sambhav Foundation embodies the spirit of possibility, proving that with the right knowledge, skills, and opportunities, marginalised communities can thrive and prosper. The journey from 2006 to today showcases the power of holistic development and the impact of a dedicated mission to empower those most in need.



📍 182, 1st floor, 2nd Main Road, 2nd Cross,
Nagarabhavi Main Road, Canara bank colony,
Bengaluru, Karnataka - 560072

✉ info@sambhavfoundation.org

🌐 www.sambhavfoundation.org